

Our Other Projects



Sampige, Mangalore



Mallige, Mangalore



Sugandhi, Mangalore



Gulabi, Mangalore



Sugandhi, Shimogga



Sooryakanthi, Hubli



T3 URBAN DEVELOPERS LTD.

Mangalore Branch : 2nd Floor, Harmain Complex, B.C. Road,
Mangalore, Karnataka State - 574 219.
Ph: 08255 - 234686

Website : www.t3urbandevlopers.com
Email : info@t3urbandevlopers.com

Hubli Branch Office

T3 URBAN DEVELOPERS LTD.
Hubli Branch: 205, Royal Mansion,
Shanthi Colony, Vidyanagar,
Hubli, Karnataka State, Pin Code - 580021.

Head Office

T3 URBAN DEVELOPERS LTD.
201, Corporate Arena, Off. Aarey Piralal Road,
Near Railway Station, Goregaon West, Mumbai - 400062
Ph: 022-67251081.

Shimogga Branch Office:

T3 URBAN DEVELOPERS LTD.
26/A, Benaka, Swamy Vivekananda Extension
Behind Good Luck Canteen
Shimogga, Karnataka State,
Pin Code - 577 201

Home Loans from
Major Banks &
Financial Institutions

Solicitor
Ashwani Kumar Rai
Advocate & Notary
Harmain Complex, B.C. Road

Ajay Pradeep Associates

S.R. Complex, B.C. Road
& Prestige Complex, Highland, Mangalore.

it is not a **BROCHURE**
it is a **PROMISE**



Sevantige

Near K.H.B. Colony, Amtady
B.C. Road - MANGALORE.

For Booking Contact :

VP Lobo (Mumbai) : 9321292899
Stany (Mangalore) : 9900995720
VN Kushi (Mangalore): 7411408099
Roshan(Mangalore) : 9482042678

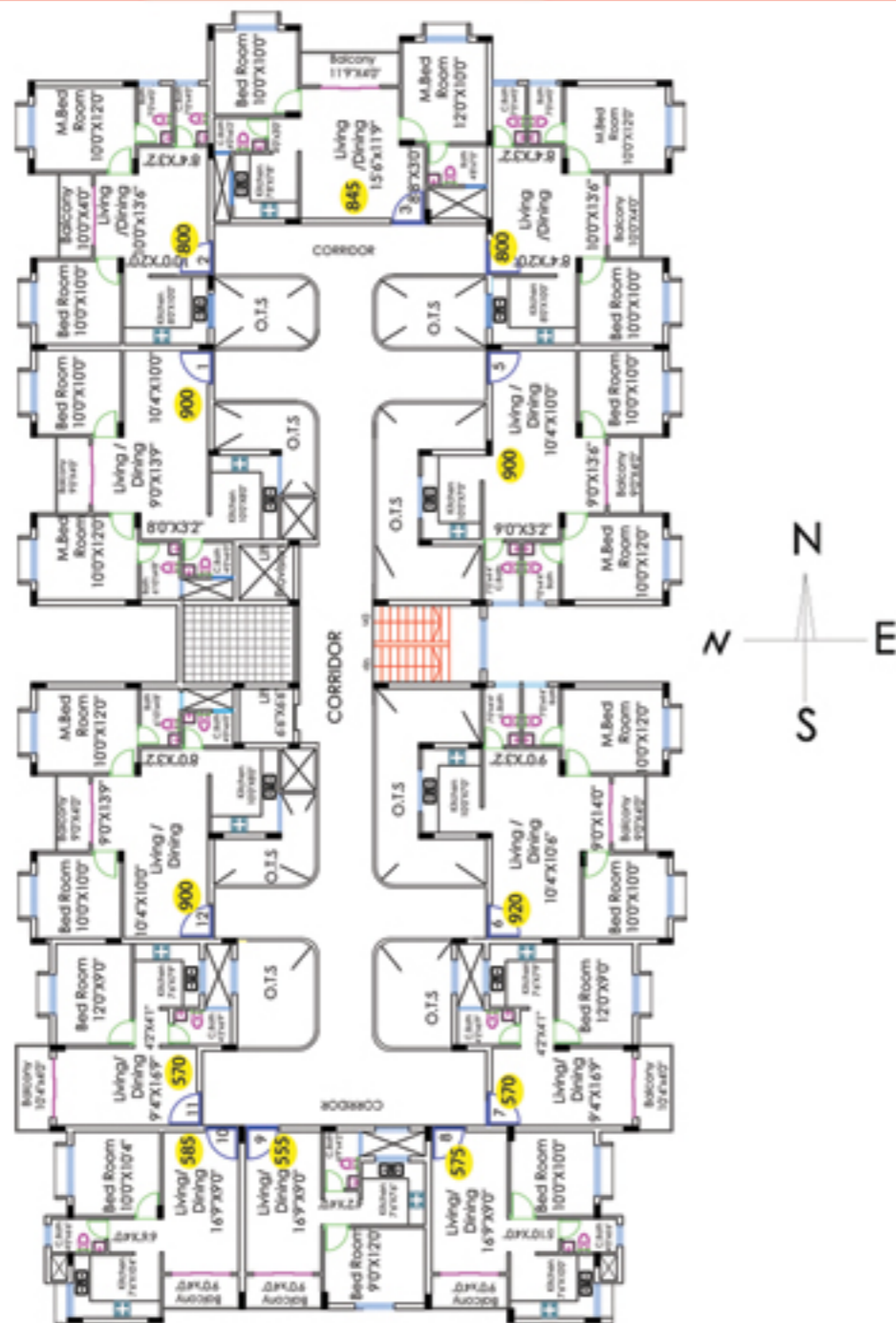
Email : info@t3urbandevlopers.com
website : www.t3urbandevlopers.com



Spacious Floor Plan

Project Highlights

Typical Ground, First, Second, Third, Fourth & Fifth Floor Plan



APARTMENT AMENITIES

- “24 HRS. HOT WATER” for Bath room through solar system
- “ABB / ANCHOR / HAVELL’S/ LEGRAND/L&T Modular switches
- “SIMPOLO / EURO / HINDWARE” luxurious sanitary ware with soft close W.C.
- “EMULSION PAINT ” for walls and ceiling
- “HINDWARE / JAQUAR / ESS ESS / ACQUEL” Designer fittings
- “TEAKWOOD ” Main Entrance door frame
- “INTERCOM” system connecting apartments & Security room
- “2X2 LUXURIOUS” Vitrified tiles flooring
- “DESIGNER” wall & Flooring tiles for bathrooms
- “POWDER COATED” Aluminium Sliding windows
- “FLUSH VALVES” for commodes
- “HOT & COLD” Mixer unit in bathrooms
- “GRANITE” Platform & stainless steel sink in kitchen

BUILDING AMENITIES

- “VASTHU SHASTRA” Design
- “FREE & ALLOTTED” Car Parking Space for All
- “MODULAR KITCHEN” for all Apartments
- “24 HRS” Security
- “24 HRS.” drinking water
- “ACCOUSTIC” Generator for Elevator, Common Lights & Apartments
- “8 PASSENGERS” Automatic Lift
- “Cable TV” connection for all apartments
- “ASTHETICALLY” designed common area, corridor & Staircase

“8 PASSENGERS” Automatic Lift

“Cable TV” connection for all apartments

“ASTHETICALLY” designed common area, corridor & S