

Our Other Projects



Sampige, Mangalore



Mallige, Mangalore



Sugandhi, Mangalore



Gulabi, Mangalore



Sugandhi, Shimogga



Sooryakanthi, Hubli



Sevantige, Mangalore



Sooryakanthi, Mangalore



Sugandhi, Hubli



GreenCity, Mangalore



Thavare, Mangalore

Home Loans from
Major Banks &
Financial Institutions



T3 URBAN DEVELOPERS LTD.

Shimogga Branch : 304, T3 SUGANDHI, Behind Bhargavi Petrol Pump,
Gopala Gowda Extension, Sagar Road, Shimogga, Karnataka-577205

Website : www.t3urbandevlopers.com

Email : info@t3urbandevlopers.com

Hubli Branch Office

T3 URBAN DEVELOPERS LTD.

Hubli Branch: 205, Royal Mansion,
Shanthi Colony, Vidyanagar,
Hubli, Karnataka State, Pin Code - 580021.

Project Execution by :

Mr. L.S. Sripathi, B.E. CIVIL
Sri Chakra, 4th Cross, Hosmane
Near Hosmane church, Shimoga
Ph: 9844275027

Head Office

T3 URBAN DEVELOPERS LTD.

201, Corporate Arena, Off. Aarey Piramal Road,
Near Railway Station, Goregaon West, Mumbai - 400062
Ph: 022-67251081.



Ajay Pradeep Associates
S.R. Complex, B.C. Road
& Prestige Complex, Highland, Mangalore.

Mangalore Branch Office:

T3 URBAN DEVELOPERS LTD.

2nd Floor, Harmain Complex, B.C. Road,
Mangalore, Karnataka State - 574 219.
Ph: 08255 - 234686

Solicitor

S.K. Anita Prakash

Advocate
H.No. 95, 3rd Cross, Basavanagudi,
Shivamoga-577201
Ph: 9448207546

it is not a *Brochure*
it is a *Promise*



t3 KAMALA

Atal Bihari Vajpayee Layout (Malligenahalli)
Sagar Road, Shimogga

For Booking Contact :

V P Lobo (Mumbai) : 9321292899
Stany (Mangalore) : 9900995720
Richard (Shimogga) : 9663066199
Avinash (Shimogga) : 9663644199

Email : info@t3urbandevlopers.com

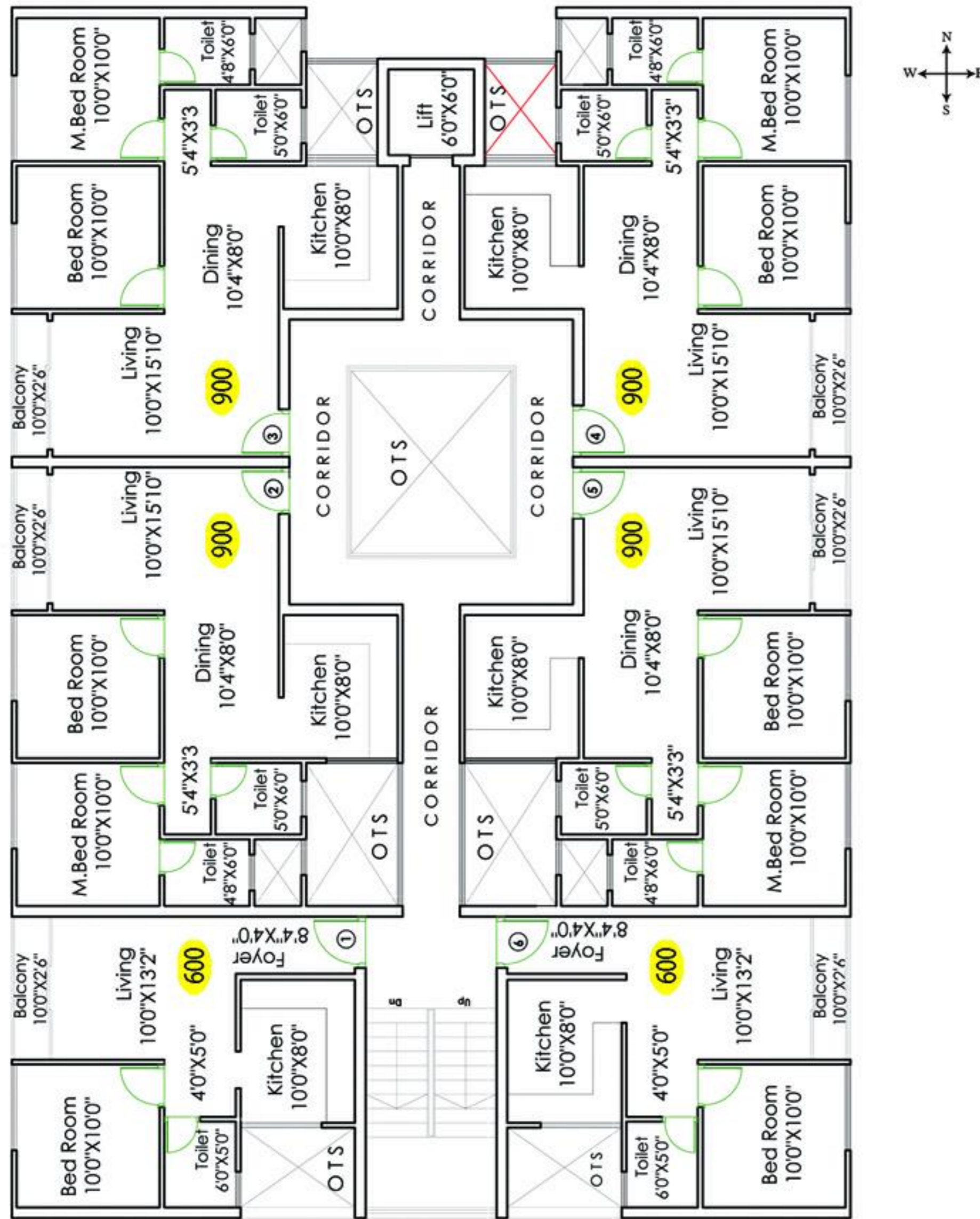
website : www.t3urbandevlopers.com



Spacious Floor Plan

Project Highlights

Typical Ground, First, Second & Third Floor Plan



APARTMENT AMENITIES

- “24 HRS. HOT WATER” for Bath room through solar system
- “ABB / ANCHOR / HAVELL'S/ LEGRAND/L&T Modular switches
- “SIMPOLO / EURO / HINDWARE” luxurious sanitary ware with soft close W.C.
- “EMULSION PAINT ” for walls and ceiling
- “HINDWARE / JAQUAR / ESS ESS / ACQUEL” Designer fittings
- “TEAKWOOD ” Main Entrance door frame
- “INTERCOM” system connecting apartments & Security room
- “ 2X2 LUXURIOUS” Vitrified tiles flooring
- “DESIGNER” wall & Flooring tiles for bathrooms
- “POWDER COATED” Aluminium Sliding windows
- “FLUSH VALVES” for commodes
- “HOT & COLD” Mixer unit in bathrooms
- “GRANITE” Platform & stainless steel sink in kitchen

BUILDING AMENITIES

- “VASTHU SHASTRA” Design
- “FREE & ALLOTTED” Car Parking Space for All
- “MODULAR KITCHEN” for all Apartments
- “24 HRS” Security
- “24 HRS.” drinking water
- “ACCOUSTIC” Generator for Elevator, Common Lights & Apartments
- “6 PASSENGERS” Automatic Lifts
- “ASTHETICALLY” designed common area, corridor & Staircase