

## Our Other Projects



Sampige, Mangalore



Mallige, Mangalore



Sugandhi, Mangalore



Gulabi, Mangalore



Sugandhi, Shimogga



Sooryakanthi, Hubli



Sevantige, Mangalore



Sooryakanthi, Mangalore



Sugandhi, Hubli



Thavare, Mangalore



### T3 URBAN DEVELOPERS LTD.

**Mangalore Branch :** 2nd Floor, Harmain Complex, B.C. Road,  
Mangalore, Karnataka State - 574 219. Ph: 08255 - 234686  
Website : [www.t3urbandevelopers.com](http://www.t3urbandevelopers.com)  
Email : [info@t3urbandevelopers.com](mailto:info@t3urbandevelopers.com)

#### Hubli Branch Office

**T3 URBAN DEVELOPERS LTD.**  
Hubli Branch: 205, Royal Mansion,  
Shanthi Colony, Vidyanagar,  
Hubli, Karnataka State, Pin Code - 580021.

#### Head Office

**T3 URBAN DEVELOPERS LTD.**  
201, Corporate Arena, Off. Aarey Pitsamal Road,  
Near Railway Station, Goregaon West, Mumbai - 400062  
Ph: 022-67251081.

#### Shimogga Branch Office:

**T3 URBAN DEVELOPERS LTD.**  
26/A, Benaka, Swamy Vivekananda Extension  
Behind Good Luck Canteen  
Shimogga, Karnataka State,  
Pin Code - 577 201

#### Ajay Pradeep Associates

S.P. Complex, B.C. Road  
& Prestige Complex, Highland, Mangalore.

Solicitor  
Ashwani Kumar Rai  
Advocate & Notary  
Harmain Complex, B.C. Road

Home Loans from  
Major Banks &  
Financial Institutions

it is not a *Brochure*  
it is a *Promise*



**t3 GreenCity**  
Vamadapadav, Mangalore.

#### For Booking Contact :

VP Lobo (Mumbai) : 9321292899  
Smitha (Mangalore) : 9663555199  
Roshan(Mangalore) : 9482042678  
Stany (Mangalore) : 9900995720  
Tindu (Mangalore) : 9591622199

Email : [info@t3urbandevelopers.com](mailto:info@t3urbandevelopers.com)  
website : [www.t3urbandevelopers.com](http://www.t3urbandevelopers.com)



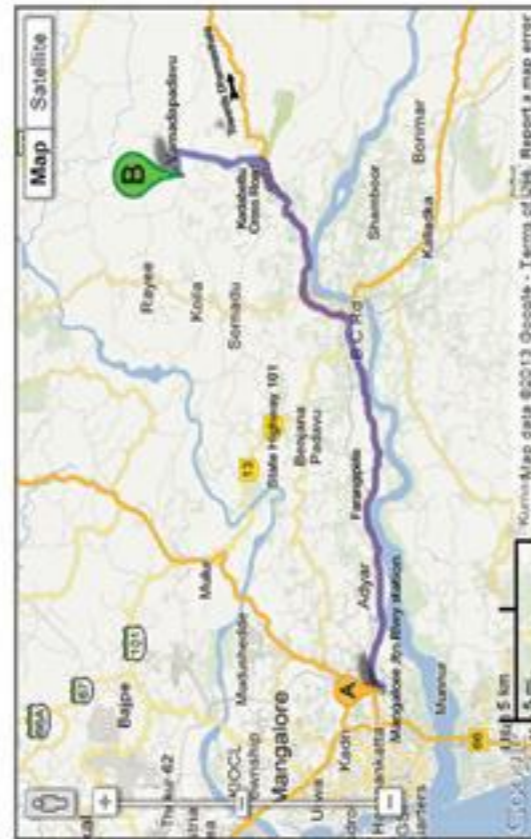
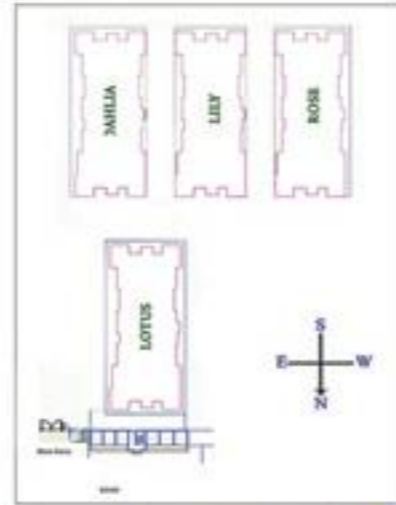
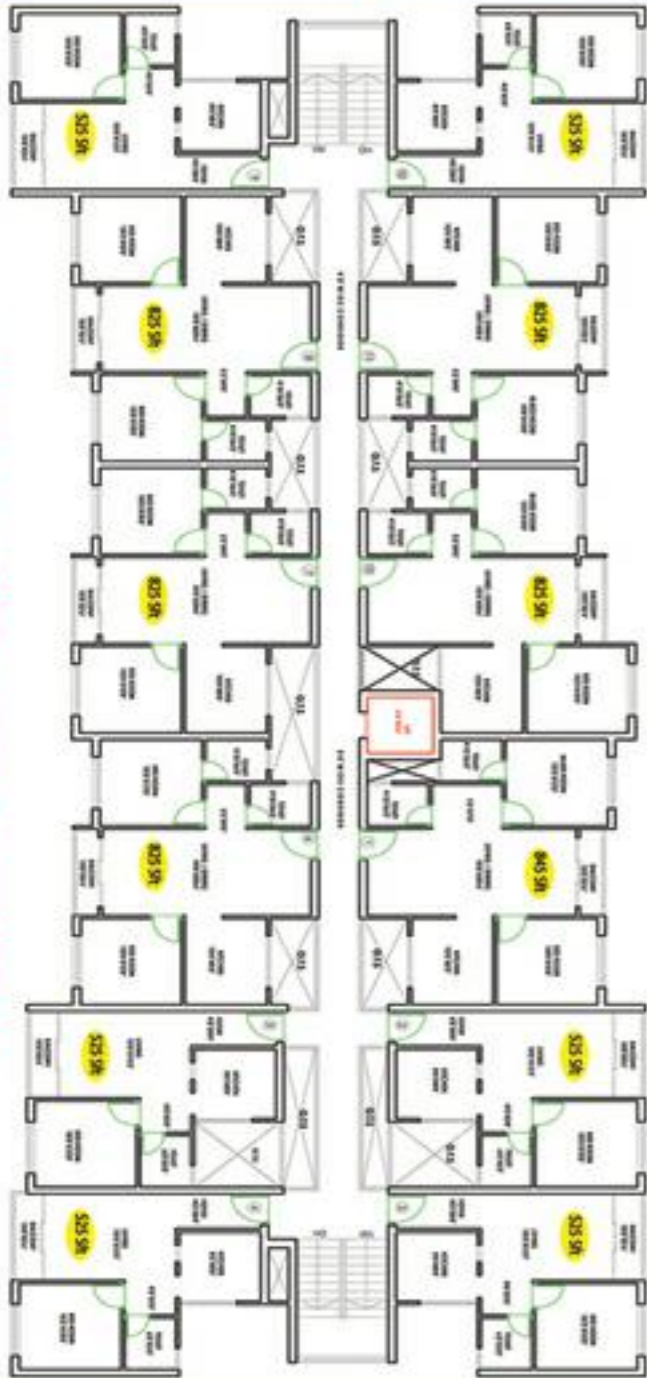
Truthful. Thoughtful. Thankful.



## Spacious Floor Plan

## Project Highlights

Typical Ground, First, Second, Third & Fourth Floor Plan



## APARTMENT AMENITIES

- "24 HRS. HOT WATER" for Bath room through solar system
- "ABB / ANCHOR / HAVELL'S/ LEGRAND/L&T Modular switches
- "SIMPOLO / EURO / HINDWARE" luxurious sanitary ware with soft close W.C.
- "EMULSION PAINT" for walls and ceiling
- "HINDWARE / JAQUAR / ESS ESS / ACQUEL" Designer fittings
- "TEAKWOOD" Main Entrance door frame
- "INTERCOM" system connecting apartments & Security room
- "2X2 LUXURIOUS" Vitrified tiles flooring
- "DESIGNER" wall & Flooring tiles for bathrooms
- "POWDER COATED" Aluminium Sliding windows
- "FLUSH VALVES" for commodes
- "HOT & COLD" Mixer unit in bathrooms
- "GRANITE" Platform & stainless steel sink in kitchen

## BUILDING AMENITIES

- "VASTHU SHASTRA" Design
- "FREE & ALLOTTED" Car Parking Space for All
- "MODULAR KITCHEN" for all Apartments
- "24 HRS" Security
- "24 HRS." drinking water
- "ACCOUSTIC" Generator for Elevator, Common Lights & Apartments
- "6 PASSENGERS" Automatic Lifts
- "Cable TV" connection for all apartments
- "ASTHETICALLY" designed common area, corridor & Staircase